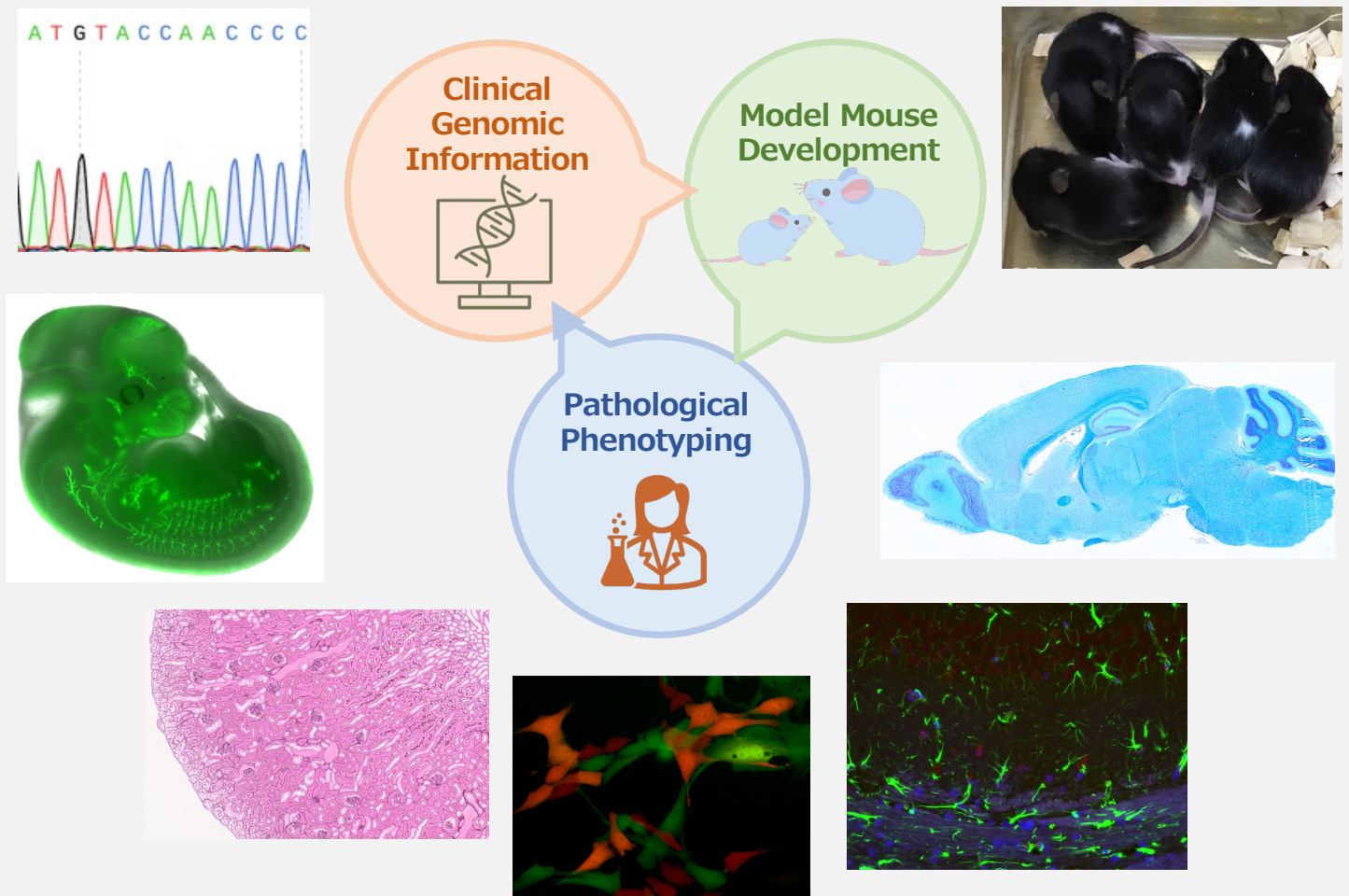


Drug Discovery Genetically Modified Animal Platform Unit

Our unit leverages disease model mice to evaluate the *in vivo* relevance of candidate therapeutic targets.

By developing innovative disease models and identifying novel drug discovery seeds, we aim to translate research findings into tangible medical and societal benefits.

The development and analysis of model mice are carried out in collaboration with [the Next-Generation Human Disease Model Research Team](#).



Contact information

Drug Discovery Genetically Modified Animal Platform Unit

3-1-1 Koyadai, Tsukuba, Ibaraki, 305-0074, Japan

Phone: +81-29-846-0048

Mail: takanori.amano@riken.jp

